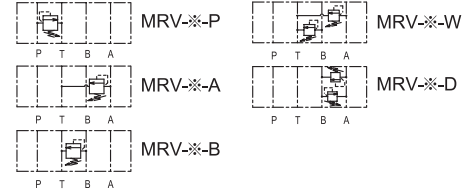




Modular Relief Valve

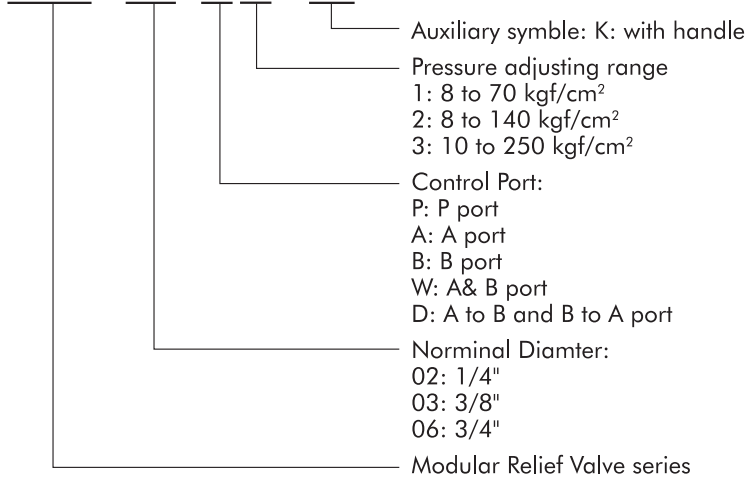
Features:

1. MRV series modular relief valves provides maximum pressure control of hydraulic circuit.
2. Wide range of operating pressure, adjusting range from 8 to 250 kgf/cm².
3. Wide range of applicability, maximum working pressure 250 kgf/cm².



HOW TO ORDER

MRV - 02 - P-1 - (K)



Handling:

1. For using as a safty valve, setting the pressure that is higher then the required circuit pressure.
2. Make sure that the tank port back pressure is not greater then 2 kgf/cm².
3. When flow rate is too small may causes the pressure instability, we recomand flow rate as following:
 - 02:No less then 6 L/min.
 - 03:No less then 8 L/min.
 - 06:No less then 10 L/min.

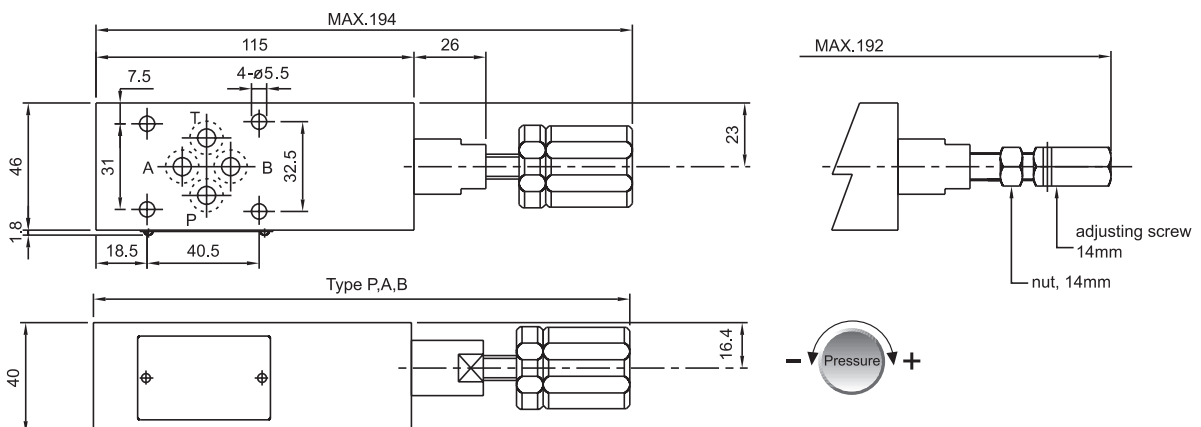
SPECIFICATIONS

Model No.	Maximum Working pressure kgf/cm ²	Pressure adj. Range kgf/cm ²	Maximum flow l/min	Weight kgs	Gasket surface Dimensions
MRV-02-P -A -B	250	1: 8 to 70 2: 8 to 140 3: 10 to 250	50	1.7	ISO 4401-03-02-0-94
MRV-02-W -D		1: 8 to 70 2: 8 to 140 3: 10 to 250			
MRV-03-P -A -B	250	1: 8 to 70 2: 8 to 140 3: 10 to 250	100	3.6	
MRV-03-W -D		1: 8 to 70 2: 8 to 140 3: 10 to 250			
MRV-06-P -A -B	250	1: 8 to 70 2: 8 to 140 3: 10 to 250	180	12.0	ISO 4401-08-07-0-94

INSTALLATION DIMENSIONS:

UNIT: mm

MRV-02-P. A. B



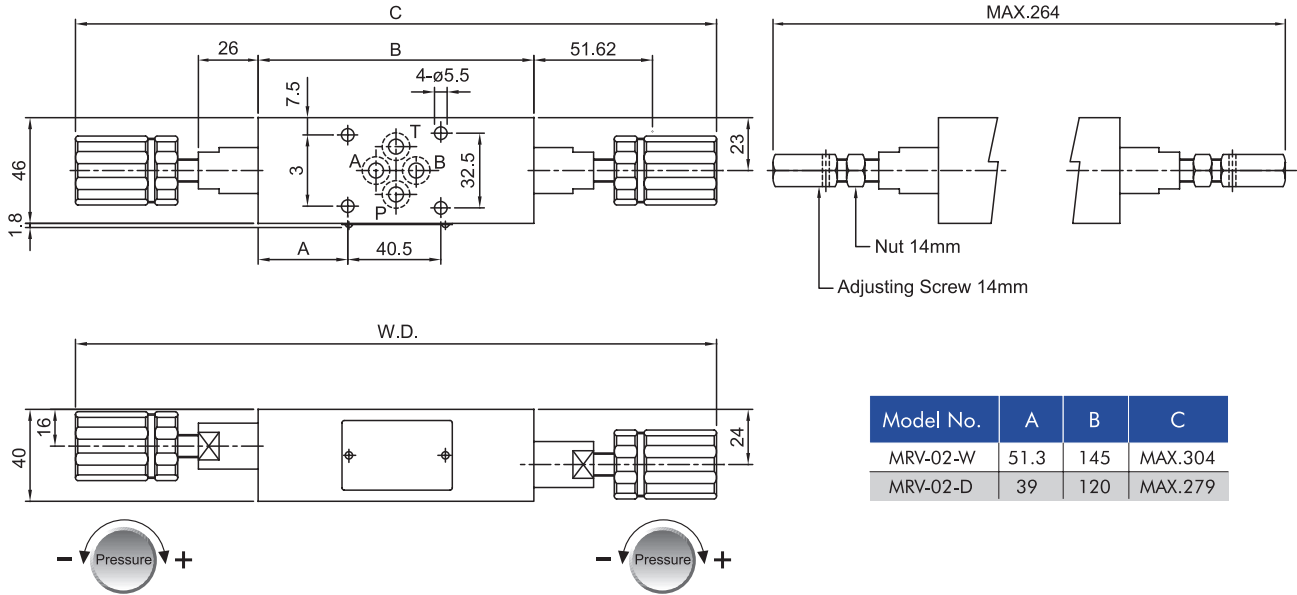


Modular Relief Valve

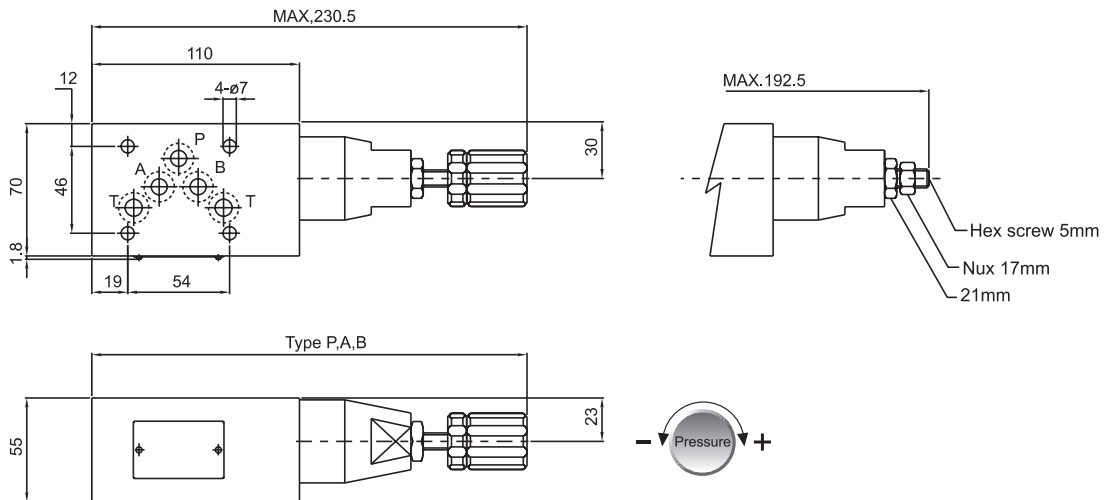
■ INSTALLATION DIMENSIONS:

UNIT: mm

MRV-02-W.D



MRV-03-P. A. B



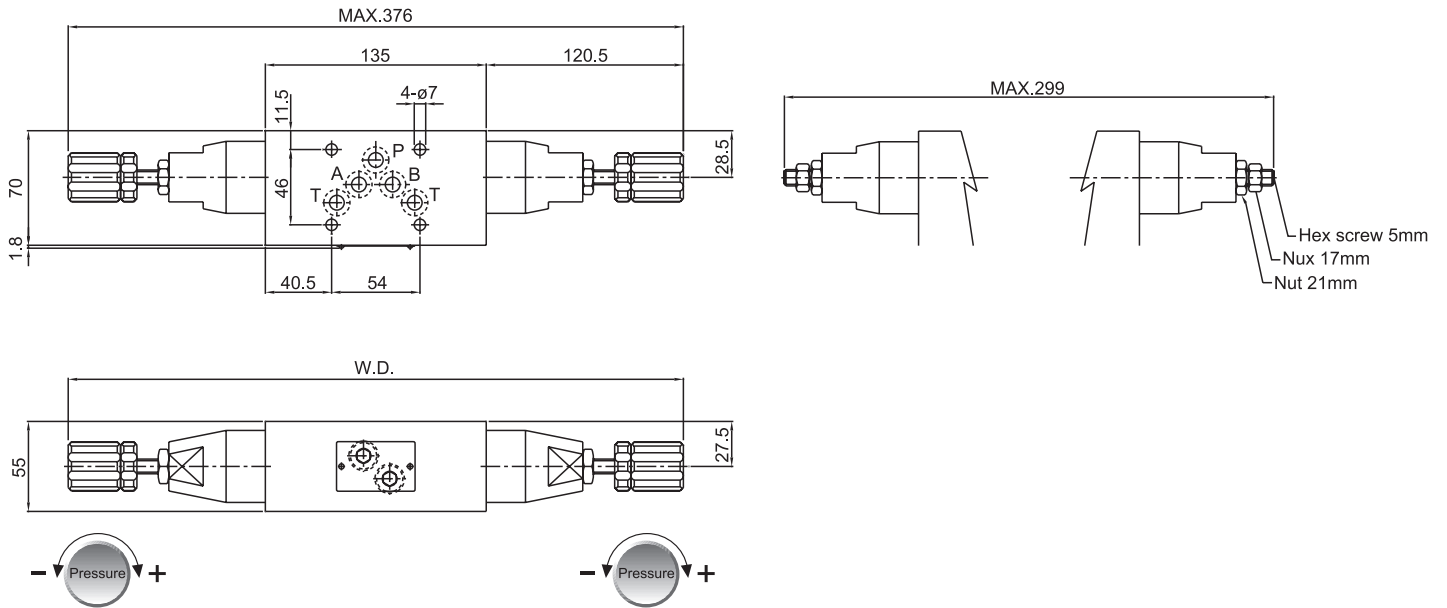


Modular Relief Valve

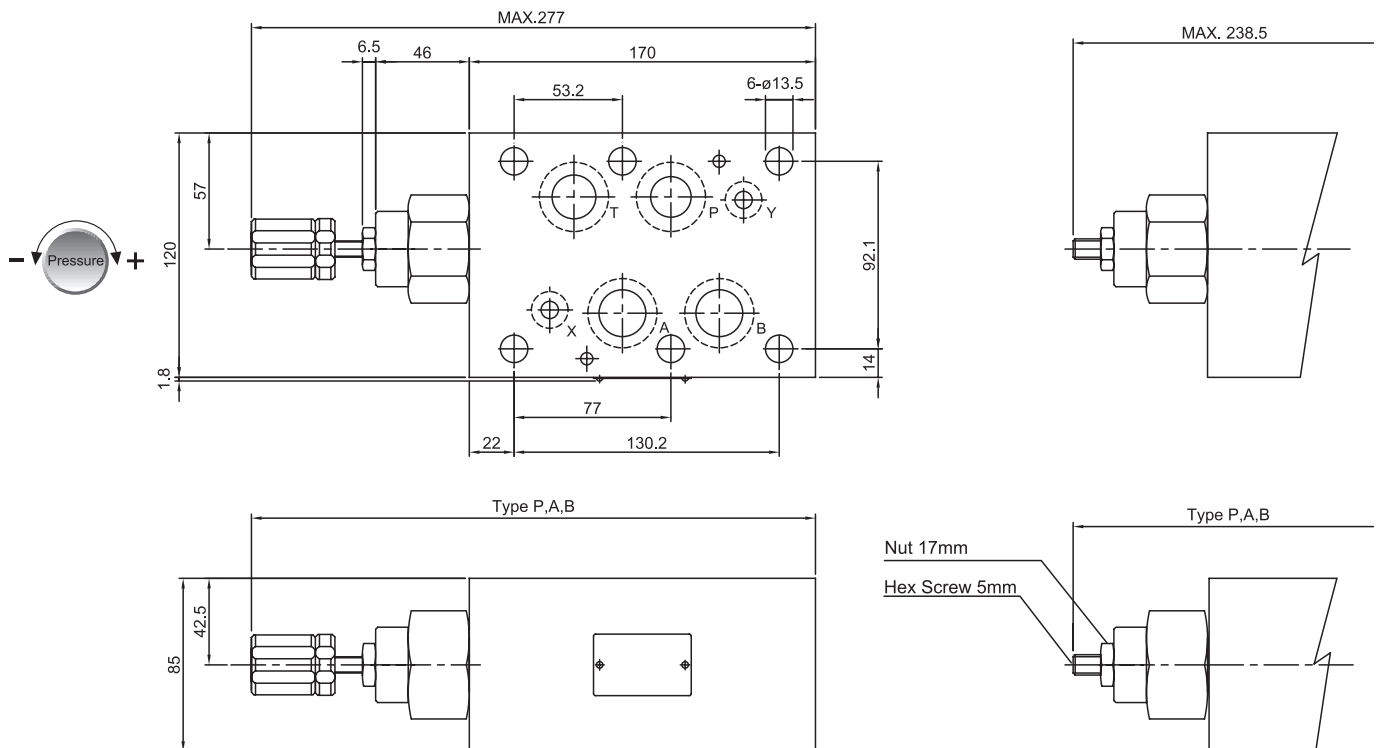
■ INSTALLATION DIMENSIONS:

UNIT: mm

MRV-03-W.D



MRV-06-P. A. B

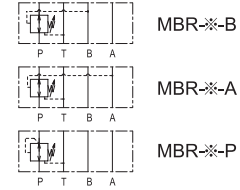




Modular Reducing Valve

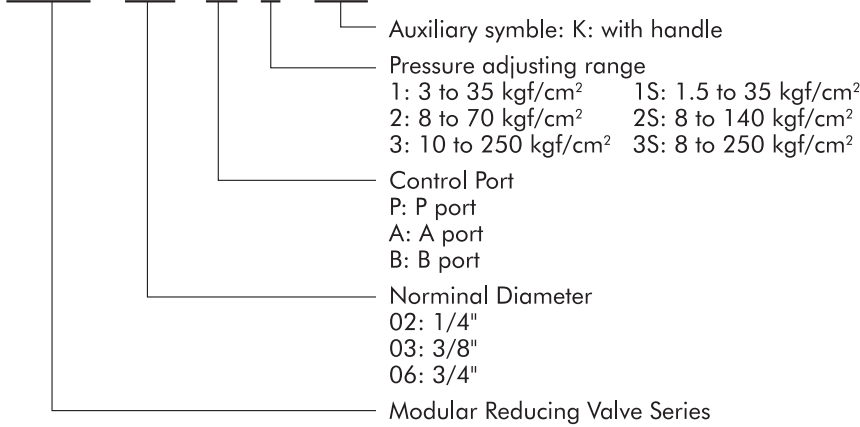
Features:

1. Modular reducing valves makes the pressure in part of the circuit lower than that of main circuit.
2. Even when pressure changes in the primary main circuit, then secondary reduced pressure is maintained at the constant level.
3. Maximum working pressure 250 kgf/cm².



HOW TO ORDER

MBR - 02 - P - 1 - (K)



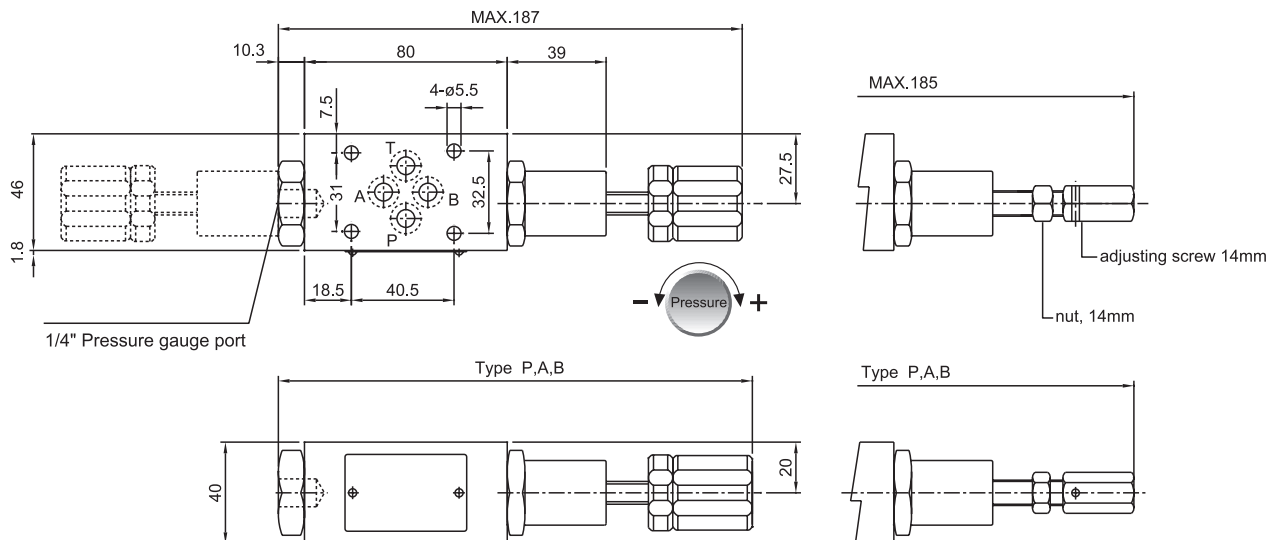
SPECIFICATIONS

Model No.	Maximum Working pressure kgf/cm ²	Pressure adj. Range kgf/cm ²	Maximum flow l/min	Weight kgs	Gasket surface Dimensions
MBR-02-P -A -B	250	1: 3-35 1S: 1.5-35 2: 8-70 2S: 8-140 3: 10-250 3S: 8-250	50	1.4	ISO 4401-03-02-0-94
MBR-03-P -A -B	250	1: 3-35 1S: 1.5-35 2: 8-70 2S: 8-140 3: 10-250 3S: 8-250	100	3.7	ISO 4401-05-04-0-94
MBR-06-P -A -B	250	1: 3-35 2: 8-70 3: 10-250	180	12.3	ISO 4401-08-07-0-94

INSTALLATION DIMENSIONS:

UNIT: mm

MBR-02-P. A. B



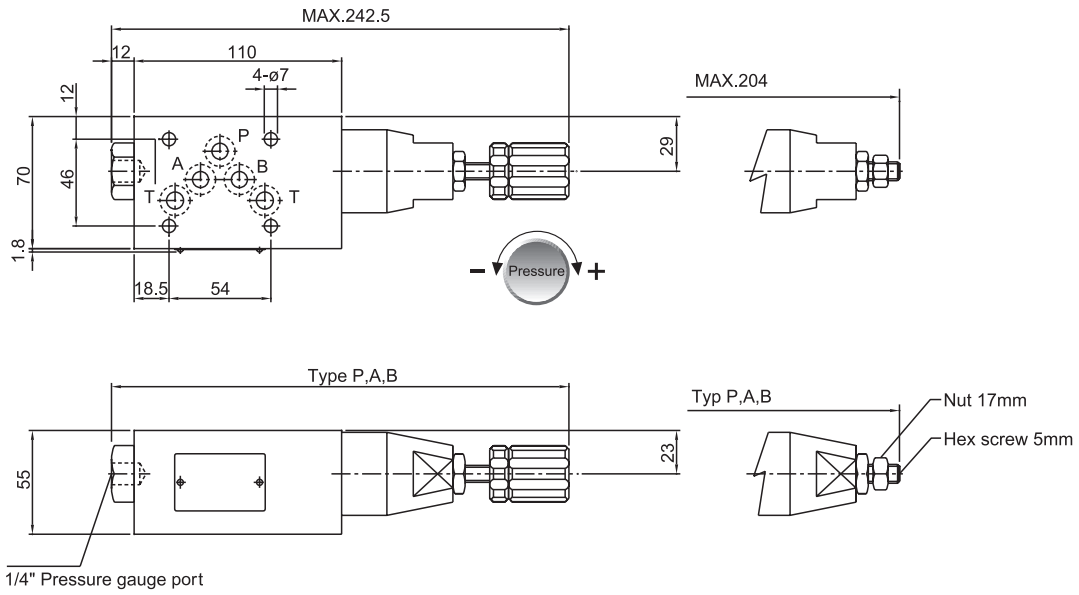


Modular Reducing Valve

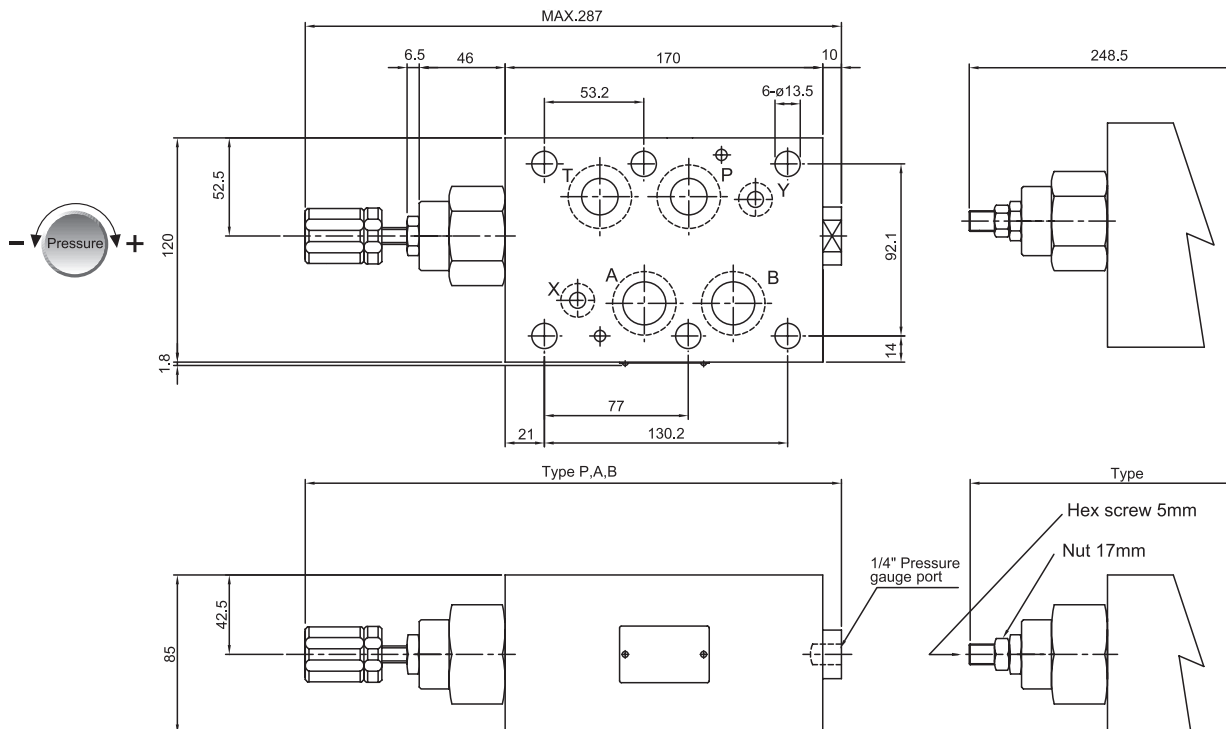
■ INSTALLATION DIMENSIONS:

UNIT: mm

MBR-03-P. A. B.



MBR-06-P. A. B.

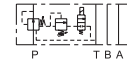




Modular Two Section Reducing Valve

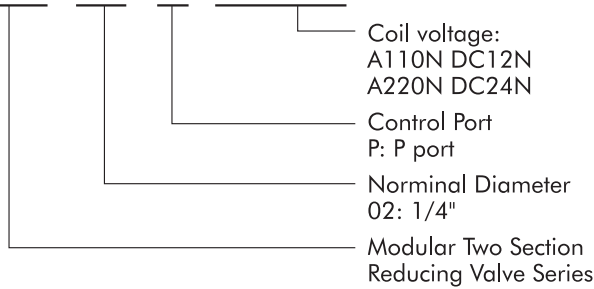
Features:

1. This valve reduced the main pressure to lower pressure circuit in first section, and controlled the low pressure circuit into higher or lower pressure in the second section controller.
2. Even when main pressure changes, the secondary reduced pressure is maintained at the constant level.
3. Maximum working pressure 140 kgf/cm².



HOW TO ORDER

MGS-02 - P - A110N



Handling:

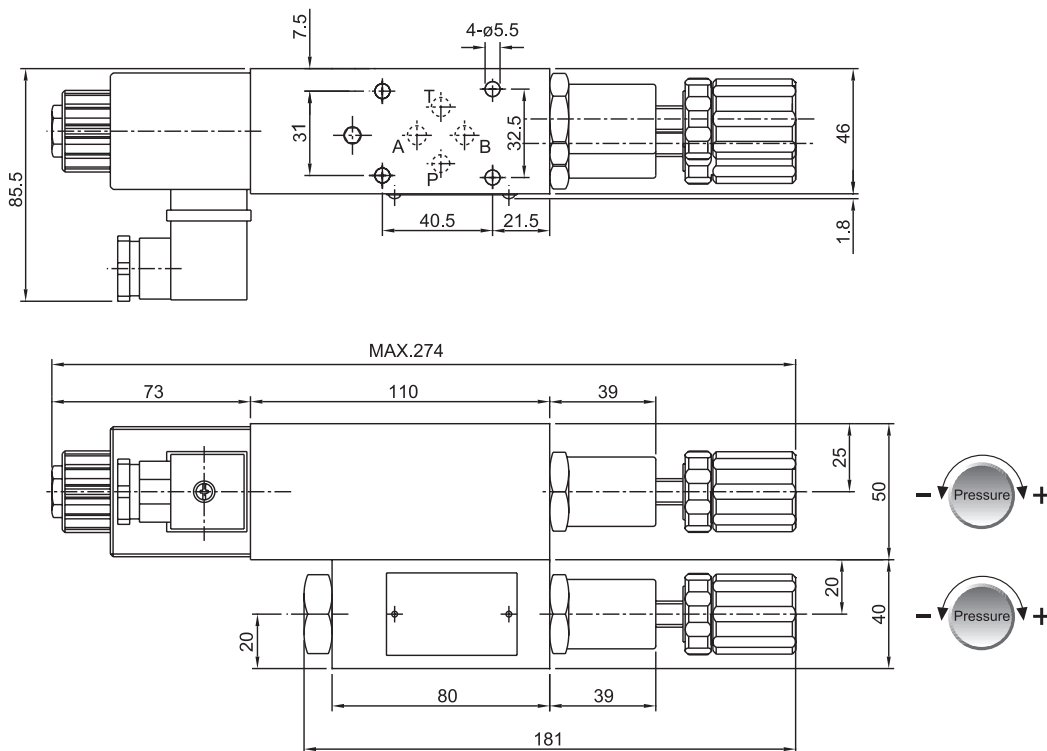
1. When the back pressure of tank port changes, it will effects the setting pressure.
2. Minimum pressure difference between first and secondary setting pressure is 5 kgf/cm², otherwise there will be instability in function.
3. Low pressure is attained when solenoid is on.
4. The coil temperature will be increasing when pump is continuous energized. Install the valem in a place that no possible be touched directly by hand.

SPECIFICATIONS

Model No.	Maximum Working pressure kgf/cm ²	Pressure adj. Range kgf/cm ²	Maximum flow l/min	Weight kgs	Gasket surface Dimensions
MGS-02-P	140	low pressure side: 5 to 50 high pressure side: 8 to 70	50	3.5	ISO 4401-03-02-0-94

INSTALLATION DIMENSIONS:

UNIT: mm

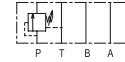
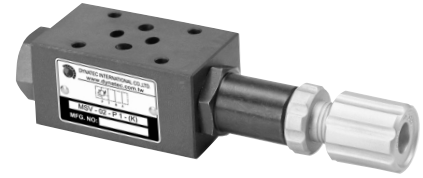




Modular Sequence Valve

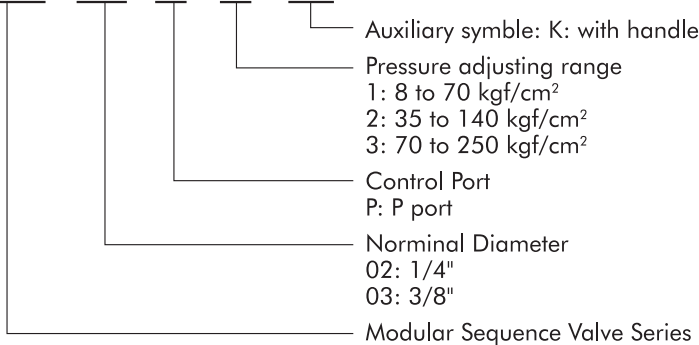
Features:

1. This valve is a pressure control valve applied in sequential actuator operation and for maintaining the main circuit pressure.
2. Wide pressure adjusting range, from 8 to 250 kgf/cm².
3. Maximum working pressure 250 kgf/cm².



HOW TO ORDER

MSV - 02 - P - 1 - (K)



Handling:

1. Install this valve directly above the sub plate or manifold(both are not included).
2. The pressure adjusting range is expressed in terms of cracking pressure.
3. When two or more sequence valves are arranged to use together, please be sure to setting pressure difference between these valves at least 10 kgf/cm².
4. The coil temperature will be increasing when pump is continuous energized. Install the valve in a place that no possible be touched directly by hand.

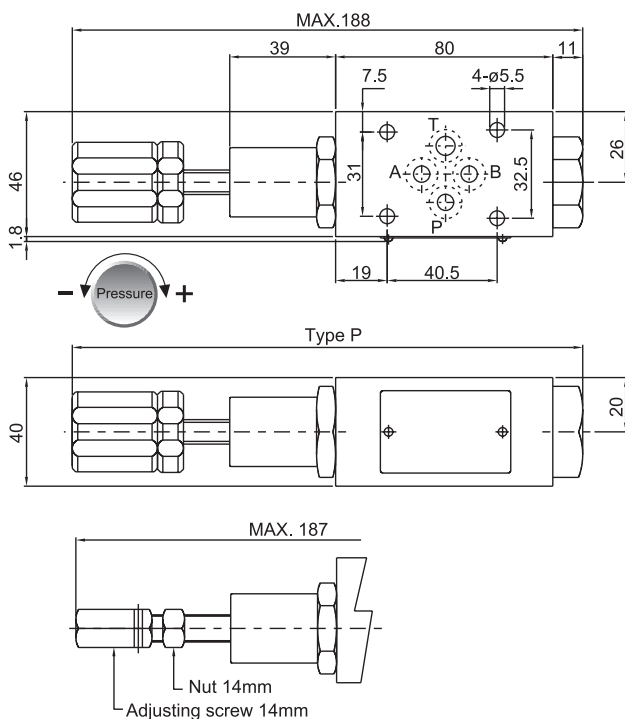
SPECIFICATIONS

Model No.	Maximum Working pressure kgf/cm ²	Pressure adj. Range kgf/cm ²	Maximum flow l/min	Weight kgs	Gasket surface Dimensions
MSV-02-P	250	1: 8 to 70 2: 35 to 140 3: 70 to 250	50	1.3	ISO 4401-03-02-0-94
MSV-03-P	250	1: 8 to 70 2: 35 to 140 3: 70 to 250	80	4.5	ISO 4401-05-04-0-94

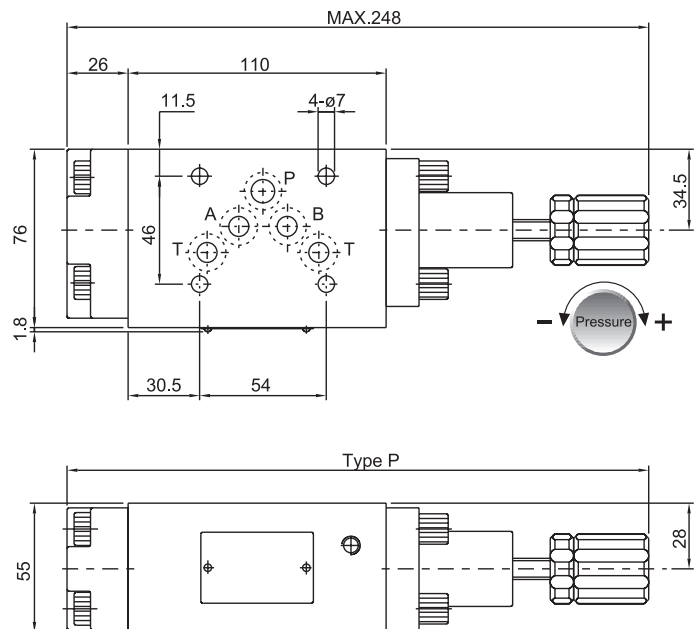
INSTALLATION DIMENSIONS:

UNIT: mm

MSV-02-P



MSV-03-P





Modular Counter Balance Valve

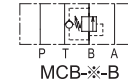
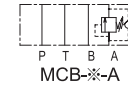
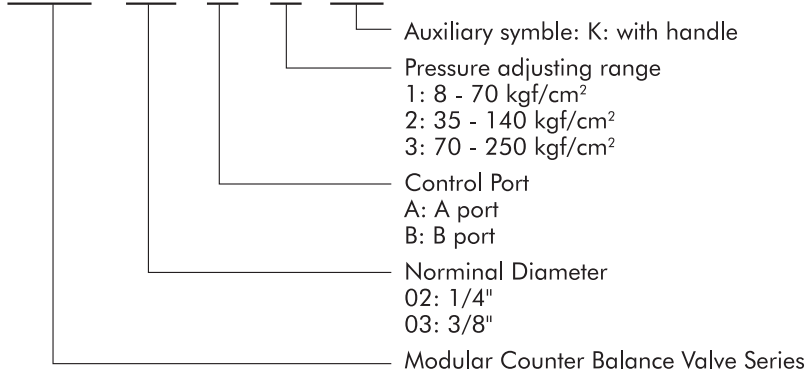
Features:

1. Counter balance valve is mostly applied in actuator back pressure control and other pressure control valve application.
2. Wide pressure adjusting range, from 8 to 250 kgf/cm².
3. Maximum working pressure 250 kgf/cm².



HOW TO ORDER

MCB - 02 - B - 1 - *



Handling:

1. The pressure adjusting range is expressed in terms of cracking pressure.
2. Tank port piping directly to the tank, and be sure that back pressure is as small as possible.

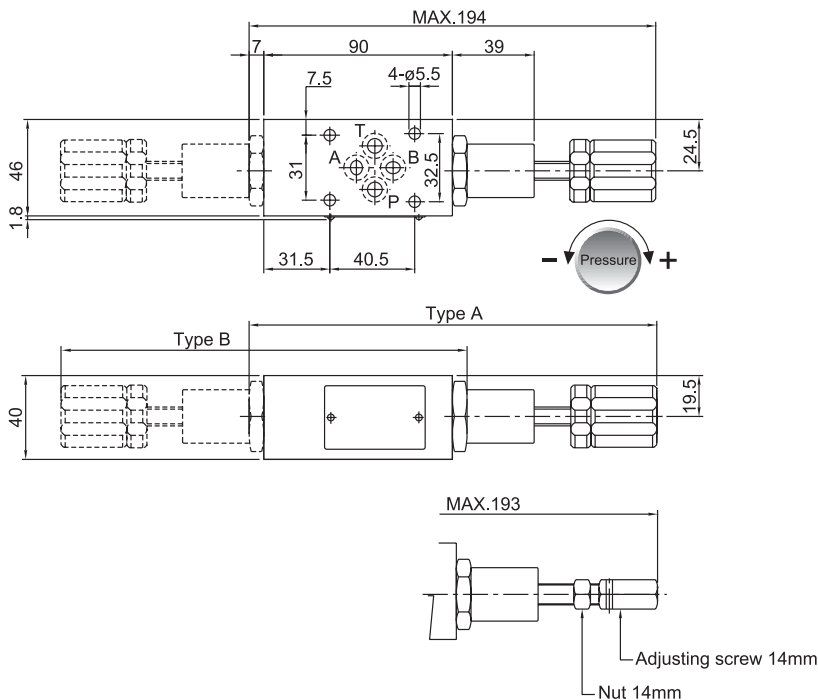
SPECIFICATIONS

Model No.	Maximum Working pressure kgf/cm ²	Pressure adj. Range kgf/cm ²	Maximum flow l/min	Weight kgs	Gasket surface Dimensions
MCB-02-A -B	250	1: 8 to 70 2: 35 to 140 3: 70 to 250	50	1.6	ISO 4401-03-02-0-94
MCB-03-A -B	250	1: 8 to 70 2: 35 to 140 3: 70 to 250	100	4.5	ISO 4401-05-04-0-94

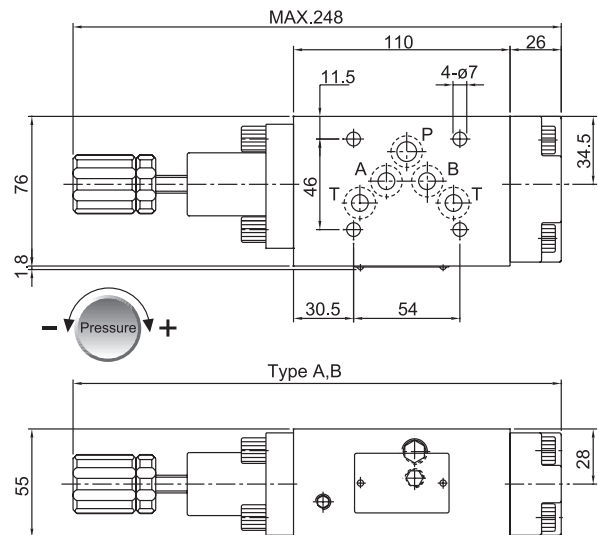
INSTALLATION DIMENSIONS:

UNIT: mm

MCB-02- A. B



MCB-03- A. B

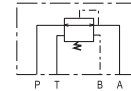




Modular Balance Valve

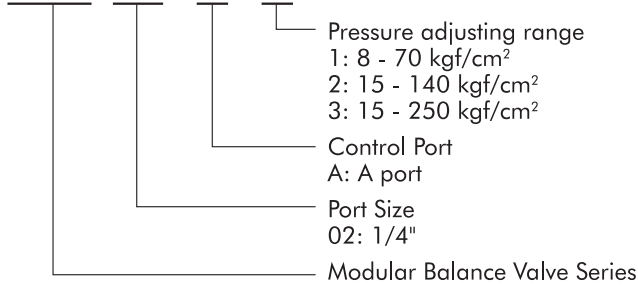
Features:

1. MRB balance valve is a combined the function of pressure reducing and counter balance.
2. Use only one handle to adjusting the pressure.
3. Mounting way is similar like G02 solenoid valves.
4. Maximum working pressure 250 kgf/cm².



HOW TO ORDER

MRB- 02 - A - 1



Handling:

1. For MRB-02 valve, the drain is directly to the B port.
2. Please be sure that drain back pressure always less than 2 kgf/cm². Tank port piping directly to the tank, and be sure that back pressure is as small as possible.

SPECIFICATIONS

Model No.	Maximum Working pressure kgf/cm ²	Pressure adj. Range kgf/cm ²	Maximum flow l/min	Weight kgs	Gasket surface Dimensions
MRB-02-A	250	1: 8 to 70 2: 15 to 140 3: 15 to 250	30	1.3	ISO 4401-03-02-0-94

INSTALLATION DIMENSIONS:

UNIT: mm

MRB-02G

